

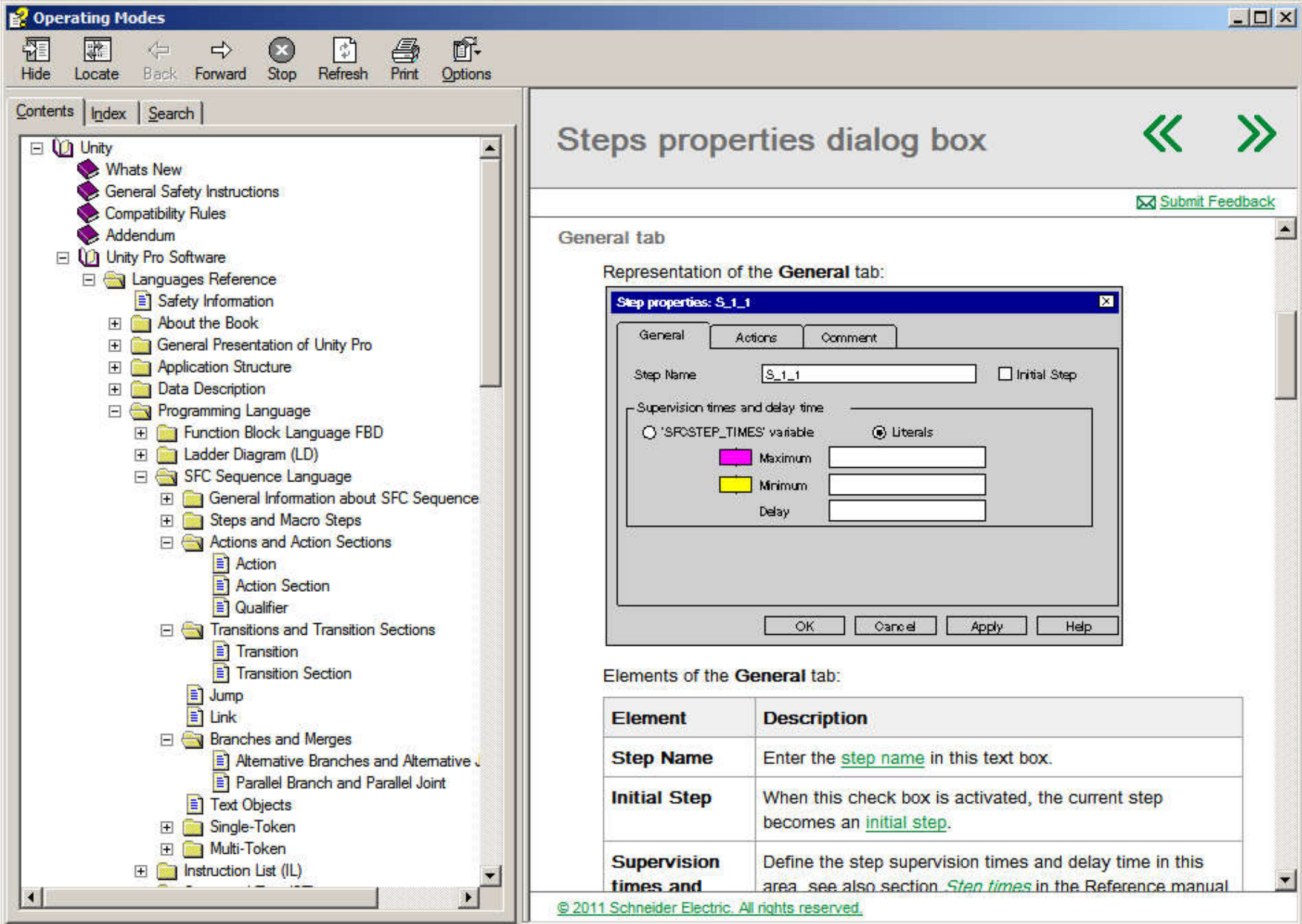
Modeling and Automation of Industrial Processes

Modelação e Automação de Processos Industriais / MAPI

GRAFCET *(Sequential Function Chart, SFC) 2/3*

<http://www.isr.tecnico.ulisboa.pt/~jag/courses/mapi2223>

Prof. José Gaspar, rev. 2022/2023



Steps properties dialog box

[Submit Feedback](#)

General tab

Representation of the **General** tab:

Step properties: S_1_1

General Actions Comment

Step Name: Initial Step

Supervision times and delay time

'SFCSTEP_TIMES' variable Literals

Maximum:

Minimum:

Delay:

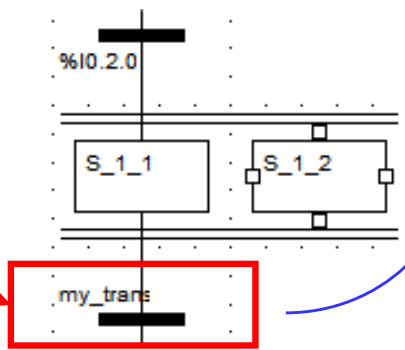
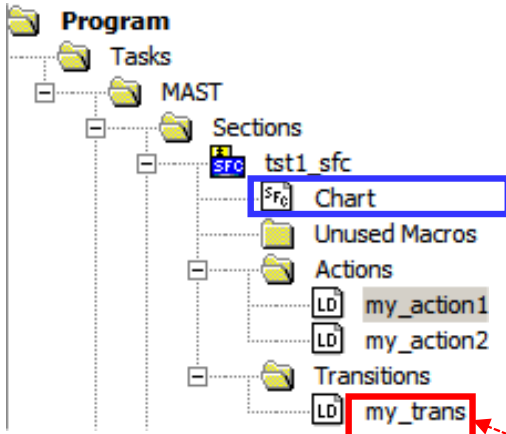
OK Cancel Apply Help

Elements of the **General** tab:

Element	Description
Step Name	Enter the step name in this text box.
Initial Step	When this check box is activated, the current step becomes an initial step .
Supervision times and	Define the step supervision times and delay time in this area. see also section Step times in the Reference manual

1. GRAFCET / SFC **Transitions**

1. Transitions can be variables or sections



Transition properties

Transition condition | Comment

Invert transition condition

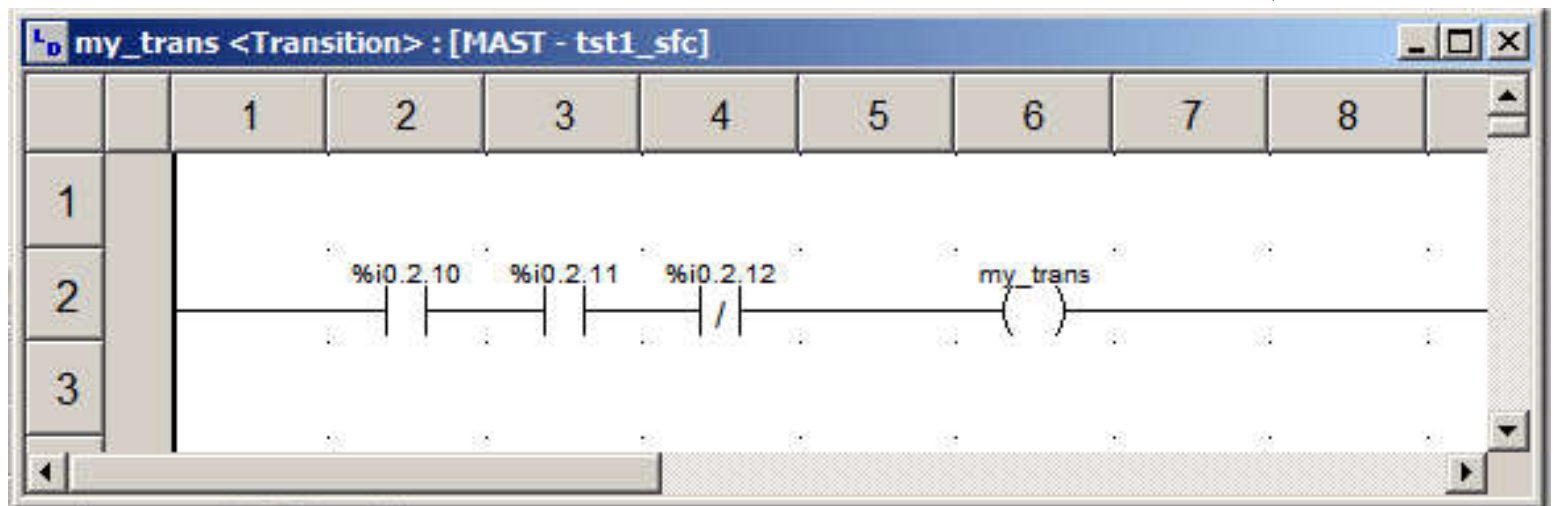
Type of transition condition

TRANSITION section Variable

TRANSITION section

my_trans Edit

OK Cancel Apply Help



Properties of **Transition Sections** (Unity Pro)

Transition sections have the following properties:

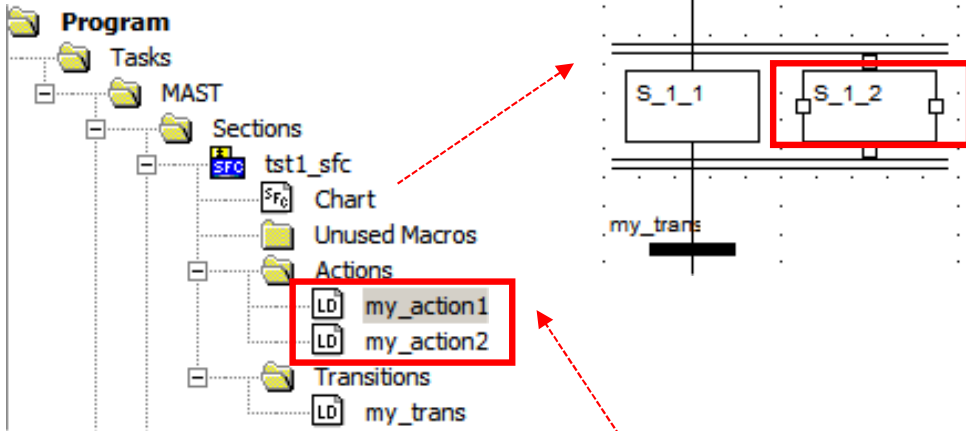
- Transition sections only have **one single output**, *transition variable*, whose data type is BOOL. The name of these variables are identical to the names of the transition sections.
- The transition variable can only be used once in written form.
- The transition variable can be read in any position within the project.

Alternatively, can use a *transition function* to define the transition logic:

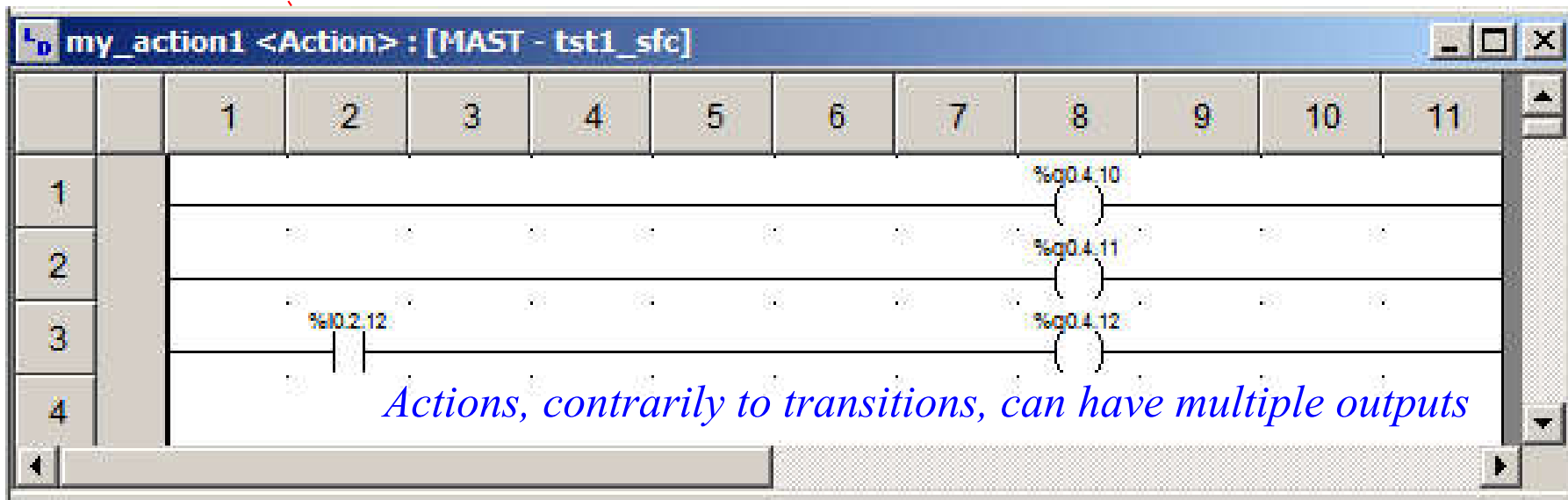
- Only functions can be used. Function blocks or procedures cannot be used.
- **Only one coil** may be used in LD.
- There is only one network, i.e. all functions used are linked with each other either directly or indirectly.
- Transition sections can only be used once.
- **Transition sections belong to the SFC section in which they were defined.** If the respective SFC section is deleted then all transition sections of this SFC section are also deleted automatically.
- Transition sections can be called exclusively from transitions.

2. GRAFCET / SFC Steps

2. *Actions are associated to Steps*

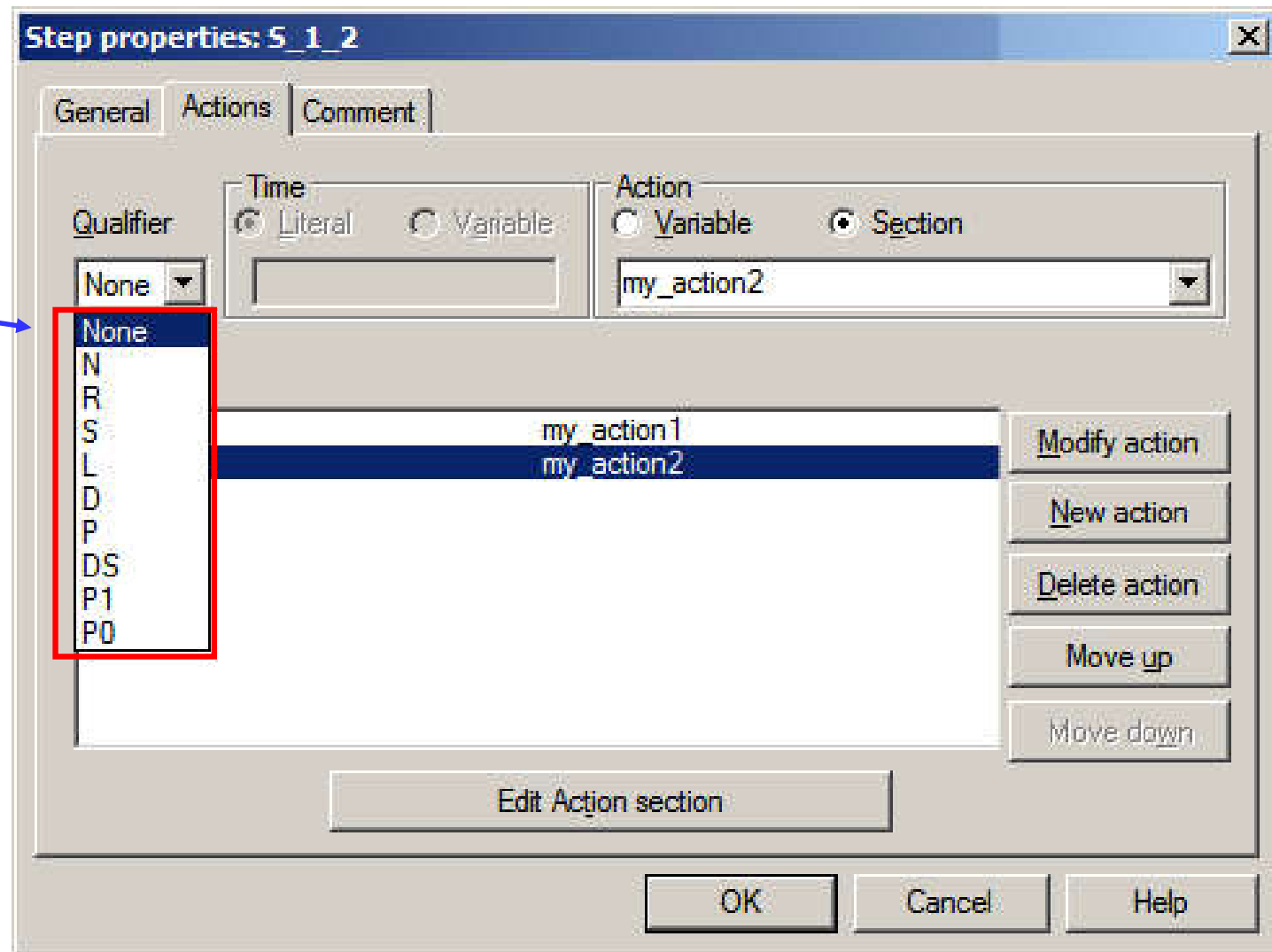


The 'Step properties: S_1_2' dialog box has three tabs: 'General', 'Actions', and 'Comment'. The 'Actions' tab is active. It features a 'Qualifier' dropdown set to 'S', a 'Time' section with 'Literal' selected, and an 'Action' dropdown set to 'my_action1'. Below this is a list of actions: 'S' and 'None' are associated with 'my_action1', while 'None' is associated with 'my_action2'. On the right side, there are buttons for 'Modify action', 'New action', 'Delete action', 'Move up', and 'Move down'. At the bottom, there is an 'Edit Action section' button. A red dashed arrow points from the 'my_action1' and 'my_action2' entries in the list to the 'Modify action' button.



Actions can be of various types

If you want to make a section, not a variable, the default “None” is ok for almost everything



IST / DEEC / MAPI

Qualifier (Meaning)	Description
N / None (None)	If the step is active then action is 1 and if the step is inactive the action is 0.
R (Overriding)	The action, which is set in another step with the qualifier <i>S</i> , is reset. The activation of any action can also be prevented.
S (Set)	The set action remains active, even when the associated step becomes inactive. The action only becomes inactive, when it is reset in another step of the current SFC section, using the qualifier <i>R</i> . Note: If an action variable is modified outside of the current SFC section, it may no longer reflect the action's activation state.
P (Pulse)	If the step becomes active, the action becomes 1 and this remains for one program cycle, independent of whether or not the step remains active.
P1 (Pulse rising edge)	If the step becomes active (0->1-edge), the action becomes 1 and this remains for one program cycle, independent of whether or not the step remains active. Note: Independent of their position in the action list field, actions with the qualifier <i>P1</i> are always processed first. More information can be found in the Action of the SFC sequence language.
P0 (Pulse falling edge)	If the step becomes inactive (1->0-edge), the action becomes 1 and this remains for one program cycle. Note: Independent of their position in the action list field, actions with the qualifier <i>P0</i> are always processed last. More information can be found in the Action of the SFC sequence language.

L (Time limited)	<p>If the step is active, the action is also active. After the process of the time duration, defined manually for the action, the action returns to 0, even if the step is still active. The action also becomes 0 if the step is inactive.</p> <p>Note: For this qualifier, an additional duration of data type <code>TIME</code> must be defined.</p>
D (Delayed)	<p>If the step is active, the internal timer is started and the action becomes 1 after the process of the time duration, which was defined manually for the action. If the step becomes inactive after that, the action becomes inactive as well. If the step becomes inactive before the internal time has elapsed then the action does not become active.</p> <p>Note: For this qualifier, an additional duration of data type <code>TIME</code> must be defined.</p>
DS (Delayed and saved)	<p>If the step becomes active, the internal timer is started and the action becomes active after the process of the manually defined time duration. The action first becomes inactive again when qualifier R is used for a reset in another step. If the step becomes inactive before the internal time has elapsed then the action does not become active.</p> <p>Note: For this qualifier, an additional duration of data type <code>TIME</code> must be defined.</p>